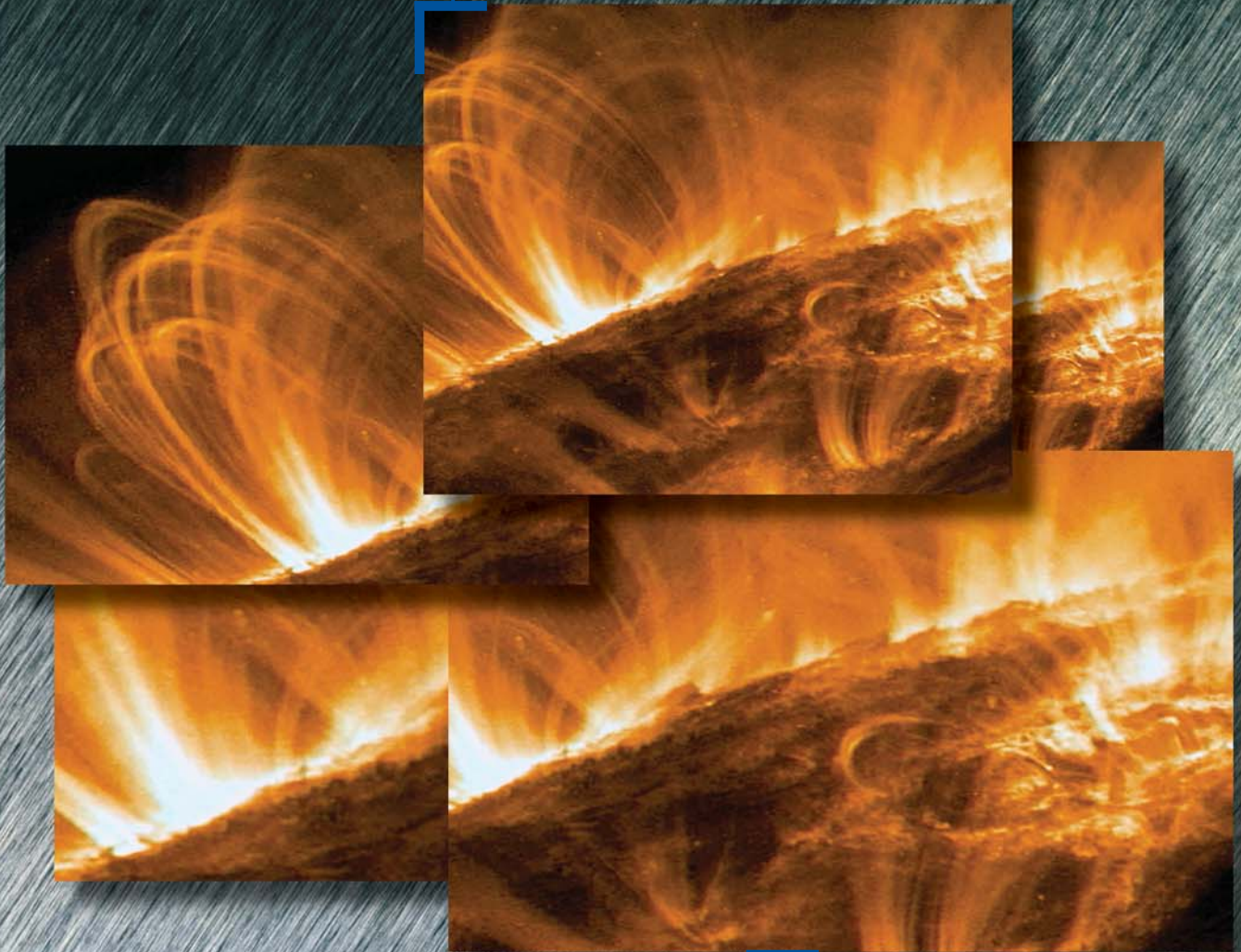


# Solar Products

**Water Pumps**


**Controls & Accessories**

**Catalog**



**SHURflo®**  
*First in Fluid Innovation*





**SHURflo's Solar Products consist of pumps and accessories ideally suited for operation on solar power. Low amp draw, consistent performance, and long life make our solar pumps perfect for use on the range, in the solar home, or wherever highly efficient DC powered fluid delivery is needed. These pages offer useful product data for configuring your solar pumping system. SHURflo has a network of knowledgeable solar product distributors ready to help you find the right SHURflo products for your solar project.**

2

9300 Series Submersible DC Pump Controllers  
9300 Series Submersible DC Pump

3

2088 Series Diaphragm Pumps – Automatic Demand 12 VDC  
2088 Series Diaphragm Pumps – Automatic Demand 24 VDC  
2088 Series Diaphragm Pumps – Automatic Demand 115 VAC

4

8000 Series Diaphragm Pumps – Automatic Demand 12 VDC  
100 Series Water Fixture Delivery Pumps

5

3000 Series Flexible Vane Impeller Pumps  
Pump / Stainless Steel Accumulator Pressure Boost Systems

6

Pre-Charged Accumulator Tank  
Accessories

7

Fittings

8

Parts Kit List

9

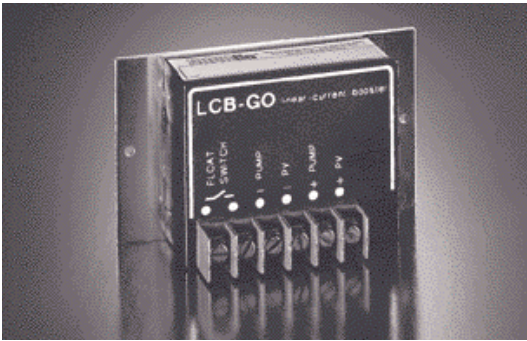
Pump Dimensions

10-11

Application Specification Guide



## 9300 Series - SUBMERSIBLE DC PUMP CONTROLLERS



### 902-100 Features

- ▶ Operates on 24 VDC
- ▶ Increases daily water output up to 30%
- ▶ System starts pumping earlier in the morning
- ▶ System stops pumping later in the evening
- ▶ Protects pump from low or high volume conditions
- ▶ Terminals for float switch

Boost your DC solar pump's performance by up to 30%. Controller optimizes your solar water pumping system by translating the current and voltage from your photovoltaic panels, into a combination that is better matched to that needed by the pump. With the optional float switch installed, the controller will automatically stop pumping when the reservoir is full.



### 902-200 Features

- ▶ Includes all 902-100 features plus:
- ▶ Switch-selectable for 12 VDC or 24 VDC operation
- ▶ Pump On / Off switch
- ▶ Water-tight enclosure and cable inlets
- ▶ Includes water level monitor mode with probes and cable

The versatile 902-200 has all the features of the 902-100 and more. This controller is switch-selectable for 12 VDC operation and includes a manual On / Off switch for easy pump maintenance. The controller comes with high / low water level sensors so the pump will not run when the well water is too low. Weather-proof enclosure.

Model	Description	Max. Array Input Voltage 12V / 24V		Min. Startup Voltage 12V / 24V		Shutdown Voltage	Max. Output Current
902-100 (LCB-GO)	9300 DC Pump Controller	45 V	N/A	25 V	N/A	28 V	5 Amps
902-200 (LCB-G)	9300 DC Pump Controller	45 V	N/A	25 V	12.5	28	7 Amps

## 9300 Series - SUBMERSIBLE DC PUMP



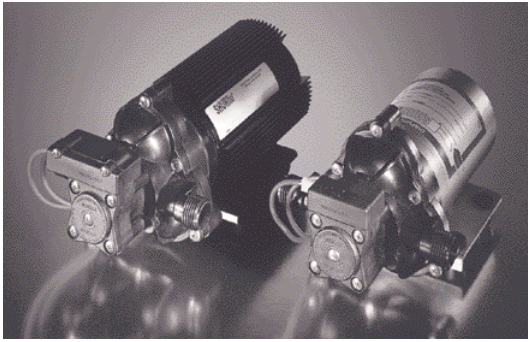
### Features

- ▶ Long life 24 VDC operation
- ▶ For 4" wells or larger
- ▶ Quick disconnect with "Watertite Gland" Patent design
- ▶ Corrosion-proof housing with stainless steel fasteners
- ▶ Runs dry without damage
- ▶ 50 mesh stainless steel screen
- ▶ State of the art solid diaphragm

The solution to your remote water pumping needs. This pump is rugged, durable and built to last. The 9300 delivers a steady 112 GPH [422 LPH] at its maximum depth of 230 ft. [70M] when supplied with 24 VDC. Its unique water-tight power connector stops water wicking and prevents potential condensation problems. Great for livestock watering, irrigation, pond aeration, remote homes and cabins.

Model	Description	Vertical Lift Feet / Meters		Flow GPH / LPH		Solar Array Min. Watts	Current Amps
9325-043-101	24 VDC Submersible Pump	20	6.1	117	443	58	1.5
		60	18.3	109	413	78	2.1
		100	30.5	103	390	99	2.6
		140	42.7	99	375	115	3.1
		180	54.8	93	352	135	3.6
		230	70.1	82	310	155	4.1

## 2088 Series Diaphragm Pumps - AUTOMATIC DEMAND PUMPS 12 VDC



### Features

- ▶ Self-priming up to 12 feet [3.7m]
- ▶ Can run dry without damage
- ▶ Optional motor cooling fins
- ▶ One-way check valve prevents reverse flow
- ▶ Automatic operation with pressure demand switch

SHURflo's 2088 Series Diaphragm Pumps deliver reliable performance in high flow, moderate pressure applications. They are used in a variety of transfer and dispense-on-demand applications where flow to 3.8 GPM is required. For added reliability, the Twist-on Strainer can be used on the 2088 inlet port. Install optional 4" heatsink 34-006 or 5" heatsink 34-007 for heavy-duty applications where extra cooling is required.

Model	Description	PSI	BAR	GPM	L/min	Amps
2088-443-144	<b>Standard Pump</b> 3.5 GPM open flow, Santoprene® valves, Santoprene® diaphragm, 45 PSI Demand Switch, 1/2" MSPT* ports.	10	0.7	2.83	10.7	5.8
		20	1.4	2.56	9.7	7.0
		30	2.1	2.31	8.7	8.0
		40	2.8	2.02	7.6	9.1
2088-514-145	<b>Premium Pump w/ Fin Cooled Motor</b> 3.6 open flow, Santoprene® valves, Santoprene® diaphragm, 45 PSI Demand Switch, 1/2" MSPT* ports.	10	0.7	2.90	11.0	5.6
		20	1.4	2.60	9.8	7.1
		30	2.1	2.30	8.7	8.4
		40	2.8	2.07	7.8	9.0
2088-514-144	<b>High Flow Pump</b> 3.8 GPM open flow, Santoprene® valves, Santoprene® diaphragm, 45 PSI Demand Switch, 1/2" MSPT* ports.	10	0.7	3.30	12.5	7.9
		20	1.4	2.90	11.0	8.9
		30	2.1	2.50	9.5	10.0
		40	2.8	2.20	8.3	10.5
2088-414-534	<b>Premium Pump w/ Splash-Proof SHURcoated Motor</b> 3.6 GPM open flow, Santoprene® valves, Santoprene® diaphragm, 45 PSI Demand Switch, 1/2" MSPT* ports.	10	0.7	2.90	11.0	5.6
		20	1.4	2.60	9.8	7.1
		30	2.1	2.30	8.7	8.4
		40	2.8	2.07	7.8	9.0

## 2088 Series Diaphragm Pumps - AUTOMATIC DEMAND PUMPS 24 VDC

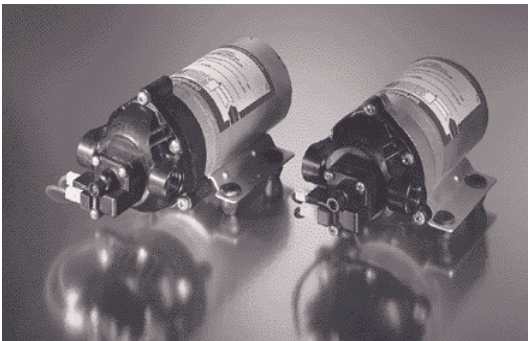
Model	Description	PSI	BAR	GPM	L/min	Amps
2088-474-144	<b>Standard Pump</b> 3.0 GPM open flow, Santoprene® valves, Santoprene® diaphragm, 45 PSI Demand Switch, 1/2" MSPT* ports.	10	0.7	2.80	10.6	2.41
		20	1.4	2.25	8.5	2.63
		30	2.1	1.75	6.6	2.73
		40	2.8	1.25	4.7	2.71
2088-574-534	<b>Premium Pump w/ Sealed Motor</b> 3.6 GPM open flow, Santoprene® valves, Santoprene® diaphragm, 45 PSI Demand Switch, 1/2" MSPT* ports.	10	0.7	3.17	12.0	3.1
		20	1.4	2.92	11.0	3.6
		30	2.1	2.63	9.9	4.1
		40	2.8	2.34	8.8	4.5

## 2088 Series Diaphragm Pumps - AUTOMATIC DEMAND PUMPS 115 VAC

Model	Description	PSI	BAR	GPM	L/min	Amps
2088-594-154	<b>Standard Pump</b> 3.3 GPM open flow, Santoprene® valves, Santoprene® diaphragm, 45 PSI Demand Switch, 1/2" MSPT* ports.	10	0.7	2.60	9.8	.58
		20	1.4	2.34	8.8	.67
		30	2.1	2.08	7.9	.76
		40	2.8	1.85	7.0	.85

\*1/2" National American Straight Pipe Thread

## 8000 Series Diaphragm Pump - AUTOMATIC DEMAND PUMPS 12 VDC



### Features

- ▶ Self-priming up to 8 vertical feet [2.4m]
- ▶ Can run dry without damage
- ▶ 12 VDC operation
- ▶ Built-in check valve

This compact and economical pump can be used for general purpose water delivery, or will dispense on demand using the built-in 60 PSI pressure demand switch. All 8000 Series Positive Displacement Pumps are self-priming, and will run dry without damage. Designed for 12 VDC operation, this pump can be equipped with a compact Twist-on Strainer for added reliability. Pump's unique design allows for easy maintenance, unmatched reliability and trouble free performance.

Model	Description	PSI	BAR	GPM	L/min	Amps
8000-443-136 (not shown)	<b>Standard Pump</b> 1.7 GPM open flow, EPDM valves, Santoprene® diaphragm, 60 PSI Demand Switch, 1/2" MPT-Male ports.*	10	0.7	1.66	6.3	3.4
		20	1.4	1.57	5.9	4.2
		30	2.1	1.48	5.6	4.9
		40	2.8	1.38	5.2	5.6
		50	3.5	1.30	4.9	6.9
8000-443-236	<b>Standard Pump</b> 1.7 GPM open flow, EPDM valves, Santoprene® diaphragm, 60 PSI Demand Switch, 3/8" NPT-Female ports.	10	0.7	1.66	6.3	3.4
		20	1.4	1.57	5.9	4.2
		30	2.1	1.48	5.6	4.9
		40	2.8	1.38	5.2	5.6
		50	3.5	1.30	4.9	6.9

\*1/2"-14 National American Straight Pipe Thread

## 100 Series Pumps - 12 VDC



### Features

- ▶ Small size
- ▶ Easy installation
- ▶ Unique design eliminates valves

Compact, rugged and reliable, the 100 is a positive displacement pump for flooded inlet, low volume, and low pressure applications. Perfect where a low volume fill pump is needed, the unique wobbler design has no valves, and can pump a wide range of fluids. Available in 12 VDC and 24 VDC. Pump must be mounted below the supply tank to prime. Not for applications that require dry running. Built-in 3/8" hose barb inlet and outlet ports.

Model	Description	PSI	BAR	GPM	L/min	Amps
100-000-21	<b>12 VDC Model</b> with motor enclosure, 3/8" hose barb ports, 1.0 GPM open flow, Nitrile-Butadiene Elastomers.	5	0.3	.70	2.6	1.7
		10	0.7	.30	1.1	2.0
		15	1.1	0	0	2.4
100-000-20	<b>12 VDC Model</b> without motor enclosure, 3/8" hose barb ports, 1.0 GPM open flow, Nitrile-Butadiene Elastomers.	5	0.3	.80	3.0	1.7
		10	0.7	.56	2.1	2.0
		15	1.1	.26	1.0	2.4

## 100 Series Pumps - 24 VDC

Model	Description	PSI	BAR	GPM	L/min	Amps
100-030-20	<b>24 VDC Model</b> without motor enclosure, 3/8" hose barb ports, 1.0 GPM open flow, Nitrile-Butadiene Elastomers.	5	0.3	.85	3.2	0.9
		10	0.7	.53	1.9	1.0
		15	1.1	0	0	1.2





Premium 3000-350

Standard 3000-050

Not intended for use with flammable liquids, or in flammable environments.

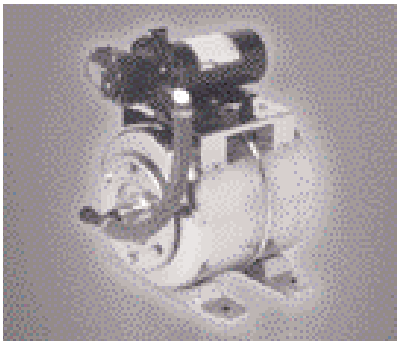
### Features

- ▶ Self-priming to 7.5 vertical feet [2.3 m]
- ▶ Maximum head of 23 feet (10 PSI) [.7 bar]
- ▶ Liquid temps from 40° F [5° C] to 185° F [85° C]
- ▶ Thermal overload protection
- ▶ Stainless steel shaft
- ▶ BUNA-N impeller and lip seal
- ▶ Built-in reverse switch and 8 foot cable with battery clips (3000-350 only)

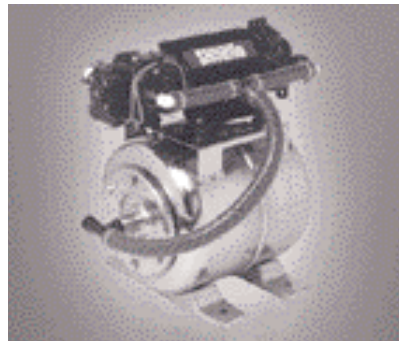
A variety of uses for these pumps has been made possible by the use of a Buna impeller for applications in pumping water to changing oil in trucks. Pumps incorporate thermal overload protection. The premium model includes a built-in, 3-position switch to simplify flow reversal. Dual ports, 3/4" male garden hose and 3/8" NPT (F).

Model	Description	PSI	BAR	GPM	L/min	Amps
3000-050	<b>Standard</b> Flex-vane STD, 12 VDC pump.	0	0	3.8	14.4	6.5
		5	0.3	3.4	12.9	7.1
		10	0.7	2.5	9.5	8.0
3000-350	<b>Premium</b> Flex-vane Premium, 12 VDC pump.	0	0	3.8	14.4	6.5
		5	0.3	3.4	12.9	7.1
		10	0.7	2.5	9.5	8.0
3000-100 (not shown)	<b>Standard</b> Flex-vane Premium, 115 VAC pump with 6' power cord.	0	0	3.8	14.4	.68
		5	0.3	3.4	12.9	.74
		10	0.7	2.5	9.7	.77

## PUMP / STAINLESS STEEL ACCUMULATOR PRESSURE BOOST SYSTEMS



12 VDC Pump / Accumulator Pressure Boost System



12V / 24V Pump Accumulator w/ Dual Head Pump

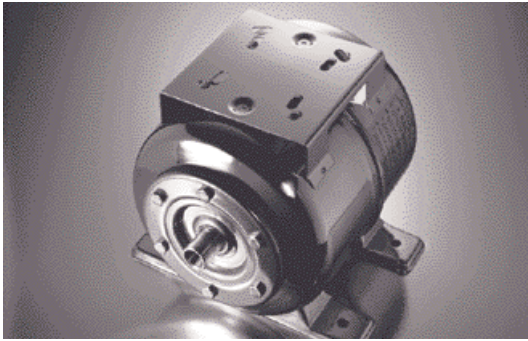
### Features

- ▶ Fully automatic
- ▶ Quiet operation
- ▶ Self-priming
- ▶ Corrosion resistant
- ▶ Can run dry without damage

These boost systems include high flow 2088 Series or Power Twin Pumps with a 2-gallon stainless steel accumulator tank to deliver instantaneous water flow to remote homes and cabins.

Model	Description	Maximum Flow GPM/LPM	Maximum AMPS	Shut-Off Pressure
804-009-00	<b>12 VDC 3.8 GPM / Accumulator Combo</b> w/ 2 gallon [7.57 Liter] stainless steel accumulator tank. Pump Specs: EPDM valves, Santoprene® diaphragm, 45 PSI	3.8 [14.4]	9.5	45 PSI [3.1 Bar]
804-009-01	<b>12 VDC 5.6 GPM / Accumulator Combo</b> w/ 2 gallon [7.57 Liter] stainless steel accumulator tank. Pump Specs: EPDM valves, Santoprene® diaphragm, 45 PSI	5.6 [21.2]	15	45 PSI [3.1 Bar]
804-009-02	<b>24 VDC 5.6 GPM / Accumulator Combo</b> w/ 2 gallon [7.57 Liter] stainless steel accumulator tank. Pump Specs: EPDM valves, Santoprene® diaphragm, 45 PSI	6.5 [24.6]	9	45 PSI [3.1 Bar]

## PRE-CHARGED ACCUMULATOR TANK



### Features

- ▶ Easy to Install
- ▶ Reduces water pressure fluctuations
- ▶ Reduces pump cycling and extends pump life
- ▶ Stainless steel tank for maximum corrosion resistance
- ▶ 3/4" Male NPT port
- ▶ No taste or odor from bladder

Extend the life of your pump with this highly efficient and corrosion resistant stainless steel accumulator tank. Helps provide smooth constant flow in your pumped water system. Reduces motor heating and pressure switch contact wear by reducing or eliminating extra pump on/off cycles. Pre-charged to 20 PSI at the factory.

Model	Description	Capacity	
		Gallons	Liters
3400-002	Vertical 2 Gallons	2	7.6

## Accessories



Accumulator Tank



Heat Sink



Water Strainer Twist-on

Model	Description
181-201	<b>Accumulator Tank</b> 24 oz. capacity, pre-pressurized to 20 PSI [1.8 bar], (100 PSI [6.9 bar] max operating pressure, Santoprene® bladder, mounting bracket. 1/2" (F) NPT Female ports, NSF approved.
34-006	<b>Heat Sink</b> Mounts to standard SHURflo Motor to assist cooling in continuous-duty applications, 5" long.
34-007	<b>Heat Sink</b> Mounts to standard SHURflo Motor to assist cooling in continuous-duty applications, 3" long.
	<b>Twist-on Water Strainer</b>
170-060-20**	50 mesh screen stainless steel screen, EPDM O-ring, 1/2" inlet, 1/2" FPST* outlet.
170-061-20**	50 mesh screen stainless steel screen, EPDM O-ring, 1/2" inlet, 1/2" FPST* outlet.
170-061-04**	50 mesh screen stainless steel screen, Buna O-ring, 1/2" inlet, 1/2" FPST* outlet.

\*\* Use adapter PN #8-145-01 for 8000 Series Pumps with 3/8" NPT-Female (Polypropylene Body)





8-145-00

8-150-01

8-205-00

### Adapters

Part #	Description
8-145-00	3/8" [10mm] NPT-Male x 1/2" [12 mm] NPT-Male
8-150-01**	1/2" [12mm] NPT-Female x 3/4" [19 mm] GHT (M)
8-205-00	1/2" [12mm] NPT-Female x 1/2" [12 mm] NPT-Male

\*\* Fittings available only in nylon – CHECK COMPATIBILITY.



Swivel Elbow w/ Wingnut

Swivel Straight w/ Wingnut

### Swivel Barb Straight with Wingnut

Part #	Description
8-071-01	1/2" [12mm] NPT-Female x 3/8" [10 mm] Barb*
8-070-01	1/2" [12mm] NPT-Female x 1/2" [12 mm] Barb*
8-154-01	1/2" [12mm] NPT-Female x 5/8" [16 mm] Barb
8-156-01	1/2" [12mm] NPT-Female x 3/4" [19 mm] Barb
8-161-01	1/2" [12mm] NPT-Female x 1/2" [12 mm] Barb
8-162-01	1/2" [12mm] NPT-Female x 3/8" [10 mm] Barb

\* Swivel Hexnut Elbow (Not Shown)

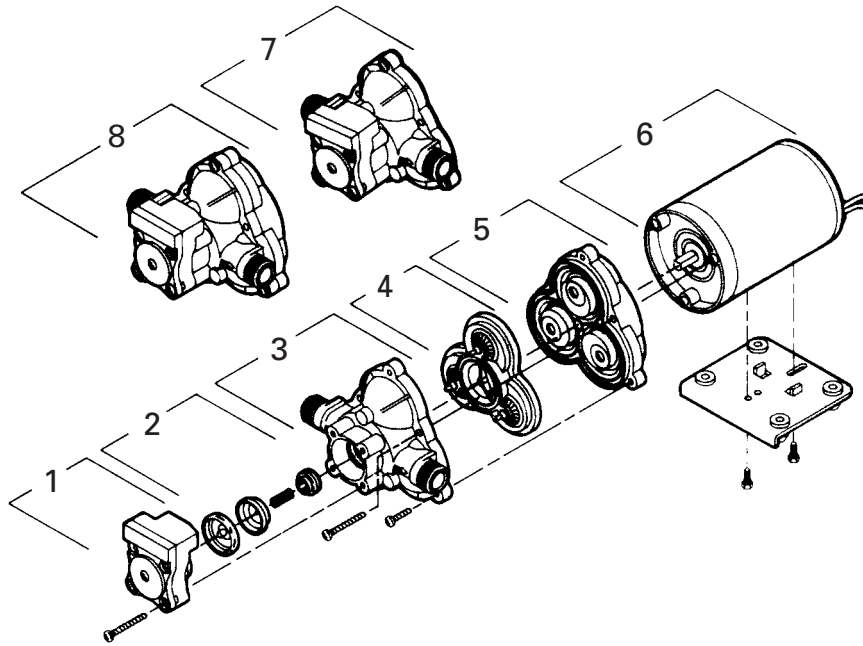
### Swivel Barb Elbow with Wingnut/Hexnut

Part #	Description
8-034-01	1/2" [12mm] NPT-Female x 1/2" [12 mm] Barb*
8-035 **	1/2" [12mm] NPT-Female x 1/2" [12 mm] NPT Male*
8-060-01	1/2" [12mm] NPT-Female x 3/8" [10 mm] Barb*
8-157-01	1/2" [12mm] NPT-Female x 3/4" [19 mm] Barb
8-155-01	1/2" [12mm] NPT-Female x 5/8" [16 mm] Barb
8-158-01	1/2" [12mm] NPT-Female x 1/2" [12 mm] Barb
8-159-01	1/2" [12mm] NPT-Female x 3/8" [10 mm] Barb

\* Swivel Hexnut Elbow (Not Shown)

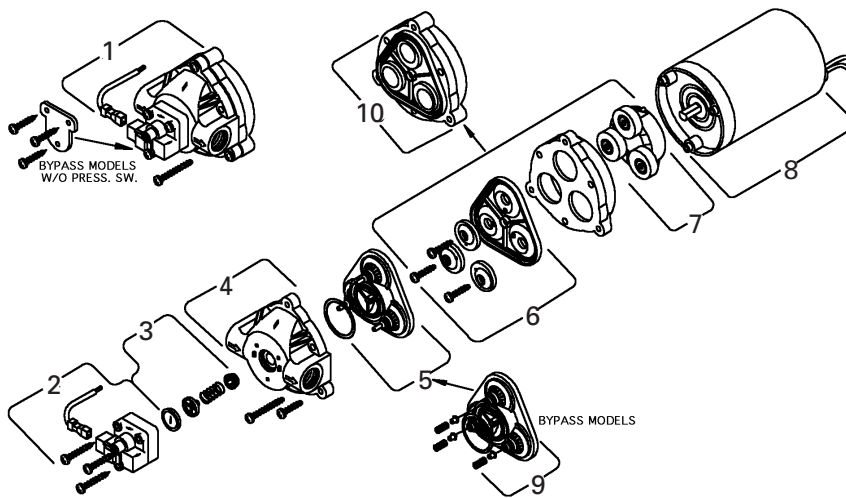
\*\* Fitting available only in Nylon – CHECK COMPATIBILITY.

## 2088 Series Parts Kit List



Model Number	1 Pressure Switch	2 Check Valve	3 Upper Housing	4 Valve Kit	Diaphragm Only	5 Drive/ Diaphragm Kit	6 Motor Kit	7 Upper Housing w/ Switch	8 Complete Pumphead Assembly
2088-443-144	94-230-35	94-237-00	94-231-30	94-232-00	N/A	94-238-03	11-111-00	94-231-20	N/A
2088-474-144	94-230-35	94-237-00	94-231-30	94-232-00	N/A	94-238-03	11-187-00	94-231-20	94-236-08
2088-594-154	94-230-35	94-237-00	94-231-30	94-232-00	N/A	94-238-03	11-150-10	94-231-20	94-236-21
2088-414-534	N/A	94-237-00	N/A	94-232-00	N/A	94-238-03	11-185-00	94-231-10	N/A
2088-574-534	N/A	94-237-00	N/A	94-232-00	N/A	94-238-03	11-181-00	94-231-10	N/A
2088-514-145	N/A	94-237-00	N/A	94-232-00	N/A	94-238-03	11-185-06	94-231-10	94-236-14

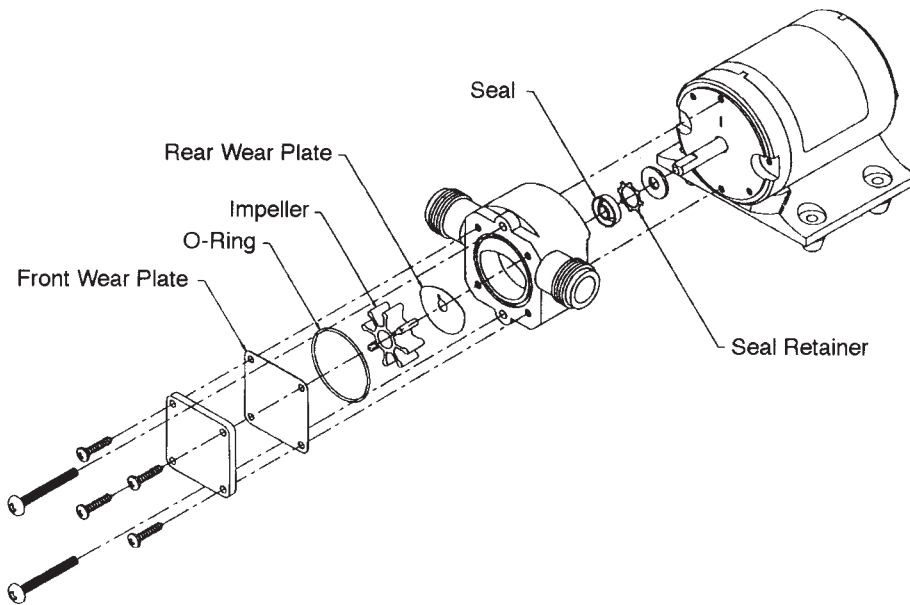
## 8000 Series Parts Kit List



Model Number	1 Complete Pump Assembly	2 Switch Assembly	3 Check Valve Assembly	4 Upper Housing	5/9 Bypass/ Non Bypass Valve Assembly	6 Diaphragm Assembly	7/10 Drive Assembly	8 Motor Assembly
8000-443-136	N/A	94-375-06	94-374-16	94-378-00	94-390-08	N/A	94-385-32	11-111-00
8000-443-236	N/A	94-375-06	94-374-16	94-379-00	94-390-08	N/A	94-385-32	11-111-00

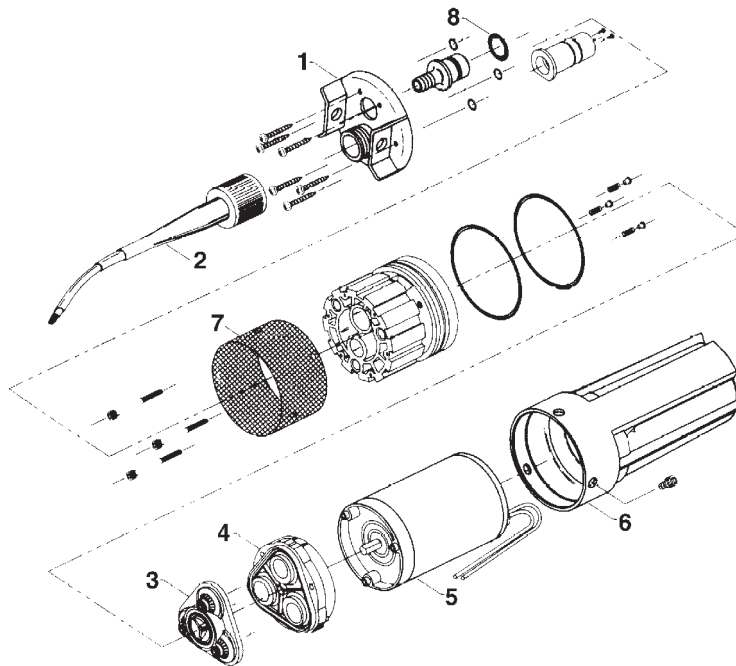


## 3000 Series Parts Kit List



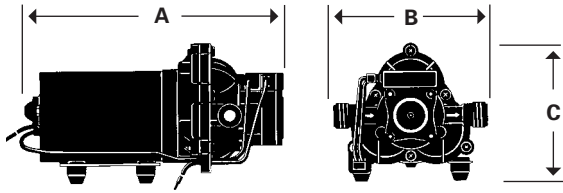
Model Number	Complete Pump Assembly	Switch Assembly	Check Valve Assembly	Upper Housing	Bypass/ Non Bypass Valve Assembly	Diaphragm Assembly	1* Drive/Impeller Assembly	2 Motor
3000-050	94-122-00	N/A	N/A	N/A	N/A	N/A	94-120-00	11-214-01
3000-350	94-122-00	N/A	N/A	N/A	N/A	N/A	94-120-00	11-214-01

## 9300 Series Parts Kit List



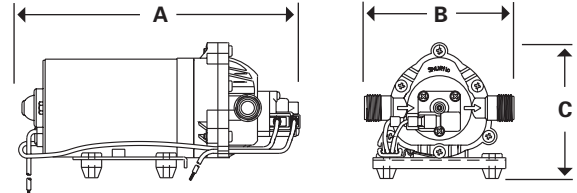
Model Number	1 Lift Plate	2 Cable Plug	3 Valve	4 Lower Housing	5 Motor	6 Canister	7 Filter Screen	8 O-Ring
9325-043-101	94-135-00	94-136-00	94-137-00	94-138-00	94-139-00	94-140-00	94-141-00	94-142-00

## Pump Dimensions



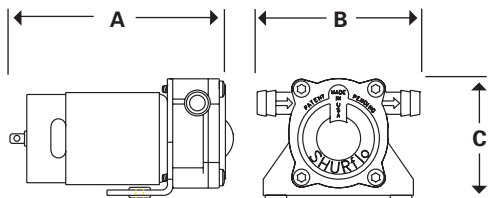
### 2088 Series

Model No.	A	B	C
2088-514-145	9.9"/25.1 cm	4.4"/11.2 cm	5.0"/12.7 cm
2088-474-534	9.9"/25.1 cm	4.4"/11.2 cm	5.0"/12.7 cm
2088-474-144	8.6"/21.8 cm	4.5"/11.3 cm	5.0"/12.7 cm
2088-574-534	9.9"/25.1 cm	4.4"/11.2 cm	5.0"/12.7 cm
2088-443-144	8.6"/21.8 cm	4.5"/11.3 cm	5.0"/12.7 cm



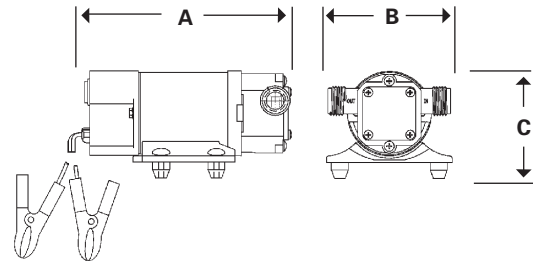
### 8000 Series

Model No.	A	B	C
8000-443-136	8.38"/21.3 cm	4.8"/10.4 cm	4.8"/10.4 cm
8000-443-236	8.38"/21.3 cm	3.28"/8.3 cm	4.8"/10.4 cm



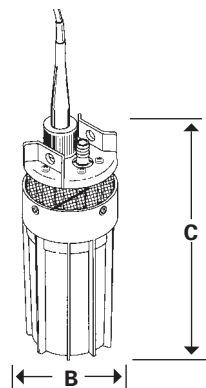
### 100 Series

Model No.	A	B	C
100-000-21	4.8"/12.2 cm	1.9"/4.9 cm	2.6"/6.6 cm
100-030-20	3.6"/9.0 cm	1.9"/4.9 cm	2.6"/6.6 cm



### Flexible Impeller Pumps

Model No.	A	B	C
3000-050	7.5"/19.1 cm	4.5"/11.4 cm	3.5"/8.9 cm
3000-100	7.5"/19.1 cm	4.5"/11.4 cm	3.5"/8.9 cm
3000-350	7.5"/19.1 cm	4.5"/11.4 cm	3.5"/8.9 cm



### Submersible Pump

Model No.	A	B	C
9325-043-101	N/A	3.75"/9.5 cm	12.0"/30.5 cm



Date <input style="width: 150px;" type="text"/>	
Company <input style="width: 90%;" type="text"/>	Address <input style="width: 90%;" type="text"/>
City <input style="width: 200px;" type="text"/>	State <input style="width: 50px;" type="text"/> Country <input style="width: 100px;" type="text"/> Zip <input style="width: 50px;" type="text"/>
Telephone <input style="width: 150px;" type="text"/>	Fax <input style="width: 100px;" type="text"/>
Requested By <input style="width: 150px;" type="text"/>	Title <input style="width: 100px;" type="text"/>
Contact at SHURflo <input style="width: 150px;" type="text"/>	
<input type="checkbox"/> Agriculture <input type="checkbox"/> Beverage <input type="checkbox"/> General Industrial <input type="checkbox"/> Marine <input type="checkbox"/> RV <input type="checkbox"/> Soil Extraction <input type="checkbox"/> Water	

1) **Rated Voltage:** ☐ AC ☐ DC    Power Source:

2) **Operating Flow Rate and Pressure Requirements:**

Min. Operating Flow  GPM @  PSI or  L/min @  BAR

Max. Operating Flow  GPM @  PSI or  L/min @  BAR

3) **Type of Control:**

Demand Switch: Max Pump Shutoff Pressure  PSI  BAR

Bypass Configuration; Max Bypass Pressure  PSI  BAR

☐ Manual    ☐ Float Switch    ☐ Solenoid    ☐ Timer

Other:

4) **Size Requirements Max Dimensions:**

Height     Width     Length     Weight

5) **Duty Cycle:** ☐ Continuous ☐ Intermittent    System on Time  Hours/Day  Day/Year

Other:

6) **System Plumbing Configuration:**    Tubing Size     Suction Length

Horizontal Lift     Discharge Length     Horizontal Rise

7) **Priming Requirements:** Self Prime: ☐ Yes ☐ No    Required Lift     Flooded Inlet: ☐ Yes ☐ No

8) **Dry Run Capabilities:** ☐ Yes ☐ No    How Long

9) **Liquid to be Pumped:**

Min. Temp of Liquid  °F  °C    Max. Temp of Liquid  °F  °C

10) **Environment:** Ambient Temperature  °F  °C    Humidity  %

11) **Number of Nozzles/Orifices to be used:**     Size each:

12) **Agency** **Approvals**

Required:

13) ☐ More information on back    ☐ Drawing on back

---

---

---

---

---

---

Date	Time	Location	Description

Recommended Model: P/N \_\_\_\_\_ Date: \_\_\_\_\_

Recommended by (Name): \_\_\_\_\_

Samples requested: ☐ Yes ☐ No Shipper No. \_\_\_\_\_

Comments: \_\_\_\_\_

\_\_\_\_\_



**SHURflo®**  
*First in Fluid Innovation*

**SHURflo Limited**  
Unit 5, Sterling Park  
Gatwick Road, Crawley  
West Sussex, RH10 2QT, UK  
Tel: 44-(0) 1293-424000  
Fax: 44-(0) 1293-421880









\*ISO 9001 Registered Site

**SHURflo®**  
*First in Fluid Innovation*

**Headquarters\***

**Mailing:** 5900 Katella Ave.

Cypress, CA 90630

**Shipping:** 5900 Katella Ave. Bldg. C

Cypress, CA 90630

Tel: (562) 795-5200 or (800) 854-3218

Fax: (562) 795-7564

**www.shurflo.com**

**East**

52748 Park Six Court

Elkhart, Indiana 46514-5427

Tel: (800) 762-8094 or (574) 262-0478

Fax: (574) 264-2169

**Europe**

SHURflo Limited

Unit 5, Sterling Park

Gatwick Road, Crawley

West Sussex, RH10 9QT, UK

Tel: 44-(0) 1293-424000

Fax: 44-(0) 1293-421880